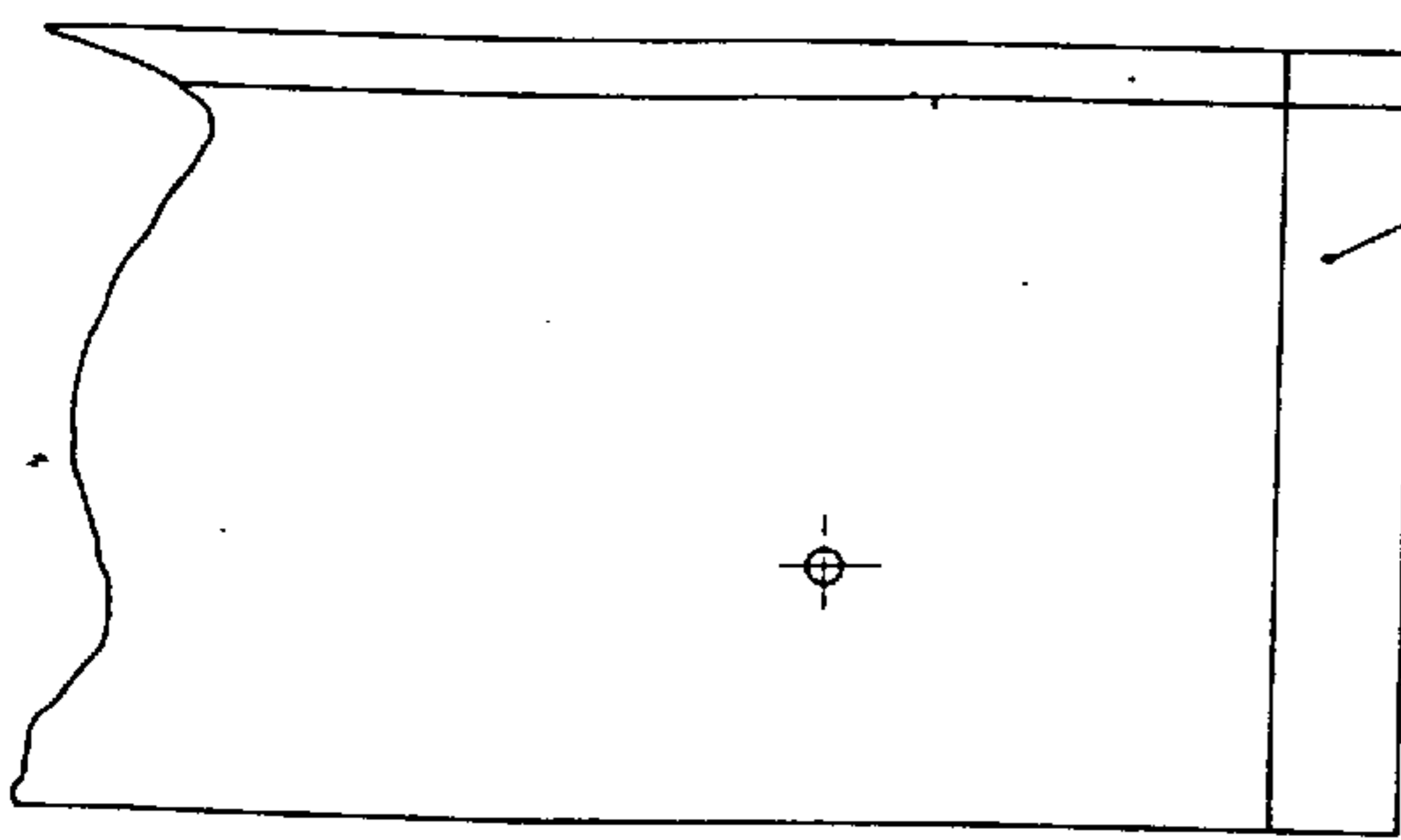
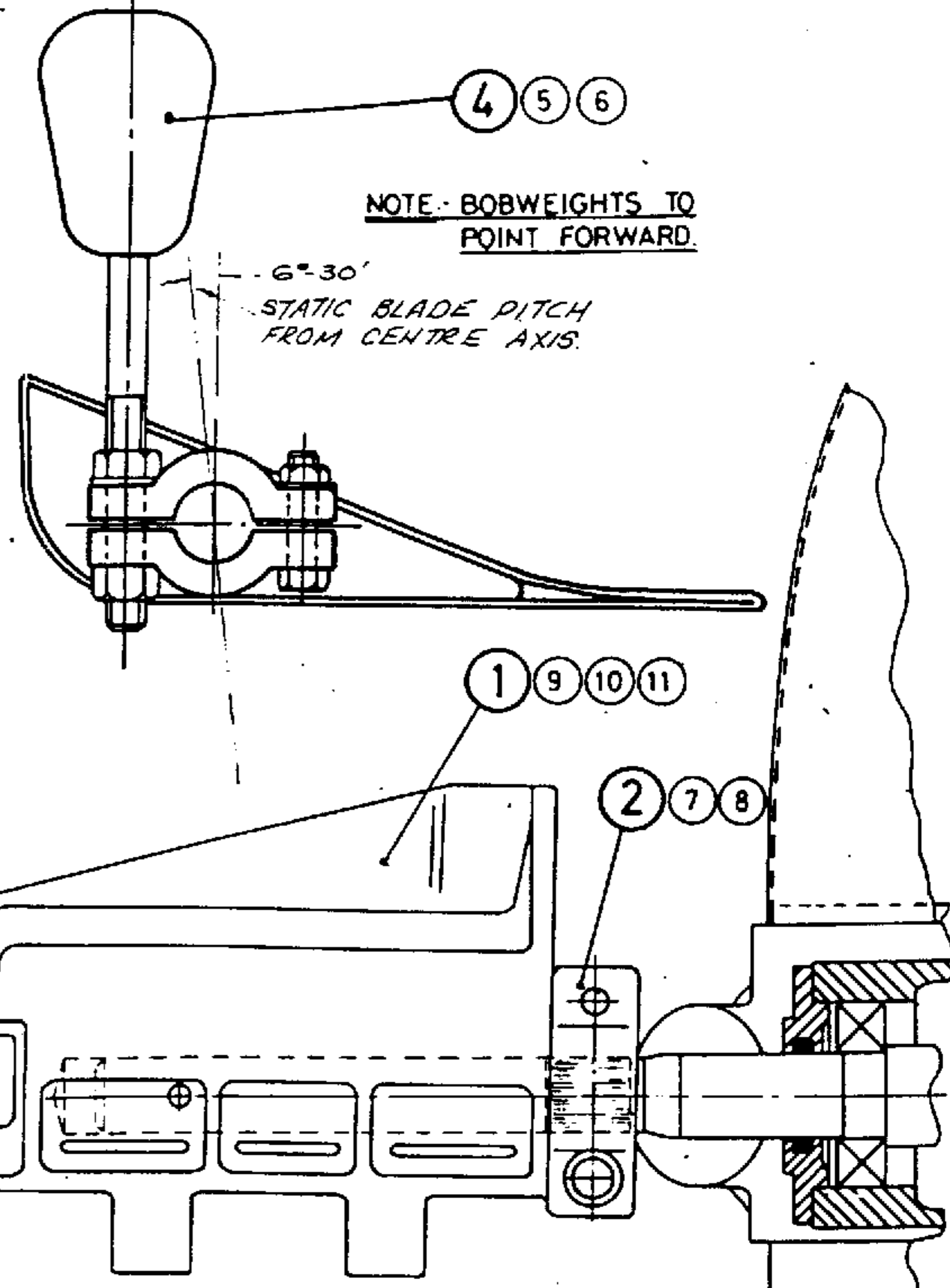


ITEM	NO.	MATERIAL	DRG. NO.	PART NO.	DESCRIPTION
1	3	LMG ALUM.	1103	1103	BLADE ARM CASTING
2	3	LMG ALUM.	539	539A	BLADE ARM CASTING CLAMP CAP
3	3	ZINC ANNEAL			PROPELLER BLADES (TO SUIT SPECIFICATION)
4	3	CAST IRON	A579	VP190B	WEIGHT SPINDLES B TYPE
5	3	SPRING STEEL			1/2" SPRING WASHERS
6	3	MILD STEEL			1" SAE HEX. FULL NUT
7	3	MILD STEEL			5/16" UNC. HEX. HD. SCREW x 2" LONG
8	3 ea	MILD STEEL			5/16" UNC. HEX. FULL NUT & WASHER
9	3	MILD STEEL			1" UNC x 3" LONG HEX. HD. SCREW
10	3 ea	STEEL			3/4" UNC UNBRAKO NUTS & SPRING WASHERS
11	3	LMG ALUM.	1104	1104	TAPER WASHERS FOR BLADE BOLTS
12	21	MILD STEEL			1/4" UNC. GUTTER BOLTS x 5/8" LONG
13	21 ea	STEEL			1/4" SPRING WASHERS & FLAT WASHERS



PM.G. CONTRACT 39079  
 SCHEDULE C 6000  
 ITEMS 103 (327/106)  
 104 (327/107)

ISSUE B  
 No. \_\_\_\_\_  
 DATE 22.5.75



**DIMENSIONAL DRAWING**  
 CAPACITY RANGE TO K.V.A.

MODEL No. PROPELLER ASSEMBLY.  
 TYPE WINDRIVEN. DR. No. **3455**